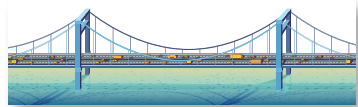


Vote Missouri!

ELECT YOUR COUNTY COMMISSIONER



The Bridge

On the Road That Leads to the School

Does this sound like a clue for a treasure hunt? It is if the treasure you are looking for is the person to call if you have concerns about roads, bridges and schools in your county. In 111 of Missouri's 114 counties, you would be looking for the county commissioners. They are people you should know about.

Except for Jackson, St. Charles and St. Louis counties and the City of St. Louis, the county commission is the governing body in 111 counties. You can find them at your county courthouse.

The commission is made up of three commissioners — a presiding commissioner and two associate commissioners. The presiding commissioner is elected by the whole county and runs the commission meetings. If only two commissioners are present and the vote on an issue is 1-1, the presiding commissioner's vote wins. Each county is divided into two equal districts, and the voters in each district elect an associate commissioner.

HELP WANTED

County Commissioner for the State of Missouri

He or she must be:

- 1 a resident of the county and district to be represented.

The commissioners have many duties. They do not make laws, but they do approve the budgets of other county officials. They decide how tax money will be spent on roads and bridges. They make sure the right

amount of tax money goes to the public schools in your county. They make sure the jail and the courthouse are kept in good shape. These are just a few of their jobs.

The presiding commissioner is elected in the non-presidential year election, and the associate commissioners in the presidential year election. This system means that there will always be an experienced commissioner on the commission.



LEARN MORE ABOUT ELECTIONS AND VOTING IN MISSOURI, INCLUDING CURRENT CANDIDATES FOR OFFICE — mo.gov and sos.mo.gov/elections/goVoteMissouri.

County Commissioner Q+A

Who takes care of bridges, roads and schools in Jackson, St. Charles and St. Louis counties and the City of St. Louis? Why are they different?

1. St. Louis City is unique in that it is both a city and a county. It is governed by a mayor and a city council that is elected by the people.
2. St. Louis, St. Charles and Jackson counties voted at various times to be charter counties, which Missouri law allows. These are the largest counties in Missouri and the people there decided they needed a more complex form of government. St. Louis and St. Charles counties elect a county executive and a county council with seven members. Jackson County also elects a county executive and has an eight member county legislature.

LEARNING EXTENSIONS

- 1 For all grade levels, go to mocounties.com to county data link, and then go to the interactive map link. Click on your county and find the list of elected officials. First note how many different offices there are in the county. The county commission or council or legislature will have to work with all of these offices on budgets and making sure there is enough office space for them. Secondly, you will find the names of the Presiding and Associate Commissioners, County Executives, County Councilman and County Legislators and their contact information. Contact them about visiting your classroom or visiting them at the courthouse to learn about their jobs.
- 2 ACTIVITY #1. Using the newspaper, find articles about issues and events your county commissioners or county councils or legislatures are involved in.
- 3 ACTIVITY #2. Interview your parents about how the decisions made by the county commission or council or legislature affect your family's life. Why are roads and bridges important to them? Why is having a well run courthouse important to them?

MISSOURI STANDARDS ALIGNMENT:
GLE—SS3-A1, C, CA2, 3, 1.6 (for grades K-8)
CLE—SS2C, CA 2, 3, 1.6 (for grades 9-12)

Brought to you by this newspaper,
The Missouri Bar and the Missouri Press Association